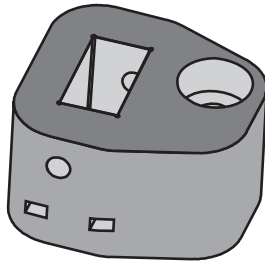
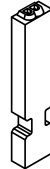


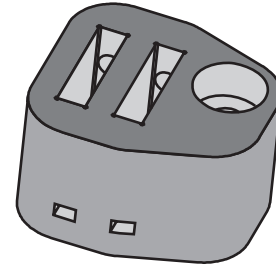
Version 1



Prägetypen siehe
Ausführung C10

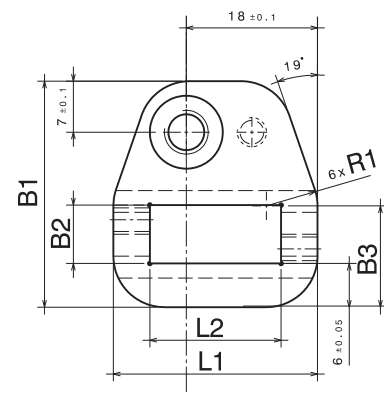


Version 2



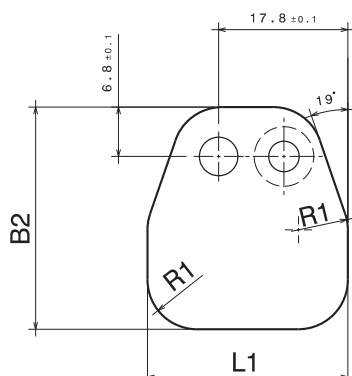
	Version 1	Version 2	Druckplatte
L1 (mm)	28,0 _{-0,1}	28,0 _{-0,1}	27,6 _{-0,1}
B1 (mm)	31,0 _{-0,1}	31,0 _{-0,1}	30,6 _{-0,1}
H1 (mm)	18,5	18,5	6,5
L2 (mm)	18,0 ^{+0,3} _{+0,1}	18,0 ^{+0,3} _{+0,1}	
B2 (mm)	8,0 ^{+0,1} _{+0,05}	4,0 ^{+0,1} _{+0,05}	
B3 (mm)	13,9 _{-0,1}	4,0 _{±0,05}	
H2 (mm)	4,0 _{-0,1}	4,0 _{-0,1}	
R1 (mm)	7,0	7,0	6,8

Version 1



Material:
leg. Werkzeugstahl
1.2379 o.ä.

Druckplatte



Version 2

